



Passeig Lluís Companys, 23 - 08010 Barcelona
Tel. +34 935670686 · twitter.com/icreacomunity
icrea@icrea.cat · www.icrea.cat

ICREA MEMOIR 2020

THE NEED TO KNOW

www.icrea.cat/memoir2020





THE NEED TO

GROW

FIND

DISCOVER

DREAM

SHARE

TRANSFORM

NURTURE

EXPLAIN

COOPERATE

Science is a universal human enterprise, and every research system has to find its own way to success.

ICREA is an institution founded in 2001 by the Catalan government tailored to the particular needs of our research system. It has succeeded in gathering one of the most influential research communities in the world.

The mission of ICREA is to attract and retain exceptional researchers from all over the world to promote the impact and global visibility of Catalan universities and research centres.

In 2020, as many as 7 ICREA Research Professors have ranked in the top 1% most cited academics in the world.

What is our secret?



THE NEED TO GROW

We are not defined by our origins, but by our choices.

ICREA chooses researchers through a robust, merit-based process that relies on the opinions of independent, high profile experts who look for quality and excellence, creativity and talent.

We are committed to hiring the minds that will shape the thoughts of future generations.



ICREA is a signatory of the San Francisco Declaration of Research Assessment.

ICREA is an institution without walls. ICREA Research Professors choose their host institutions within the Catalan research system where they act as research leaders and attractors of additional talent.



ICREA Research Professors can move freely within the Catalan research system keeping their ICREA position.

THE NEED TO FIND



ICREA gathers a vibrant community of scientists and academics who contribute to the advancement of humankind by exploring, interpreting and questioning. ICREA is constantly expanding and attracting new talent.

269

ICREA Research Professors
hold permanent ICREA positions
as of 31st December 2020.

130

in universities

114

in CERCA centres

14

in CSIC centres

11

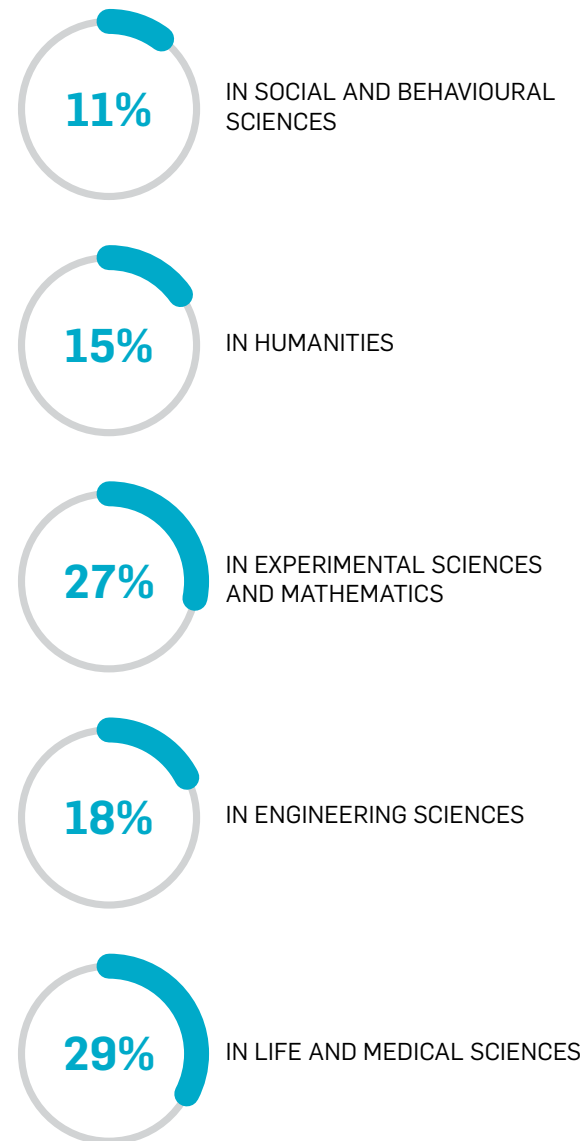
in other research
institutions

An external, independent Promotion Committee regularly evaluates their performance throughout their career.

THE NEED TO DISCOVER



ICREAs IN EVERY AREA



ICREAs FROM MANY COUNTRIES



27
nationalities
represented

40%
non-Spanish
nationals



ICREA is a holder of the EURAXESS Human Resources Strategy For Researchers (HRS4R) badge in recognition for its outstanding HR practices.

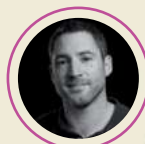
ICREA Research Professors often attain recognition for pursuing research on the frontiers of knowledge. This year was no exception: they continued to receive major awards and honours for their contribution to the advancement of humankind through their outstanding research.

These are a few ICREA Research Professors who received awards in 2020.



**SALVADOR
AZNAR-BENITAH**

Liliane Bettencourt Prize
for Life Sciences



MANUEL IRIMIA

1st José Luis Gómez-
Skarmeta[®] Award for
scientific excellence in
Developmental Biology



VIVEK MALHOTRA

Humboldt Research
Award of the Alexander
von Humboldt Foundation



PABLO MENÉNDEZ

Best CIBERONC Young
Leader Researcher



NÚRIA MONTSERRAT

EMBO Young
Investigator Prize
Premio "Constantes y Vitales"
a la mejor publicación
biomédica de 2020



ÁNGEL RAYA

Premi Ciutat de Barcelona
2019, Ciències de la Vida



CÉSAR R. RANERO

Premi Ciutat de Barcelona
2019, Ciències Ambientals
i de la Terra



NEUS SABATÉ

IX Premio Nacional de
Investigación en Cáncer
"Doctores Diz Pintado"
Premi FIDEM 2020 a la
Innovació Tecnològica



**MARÍA VICTORIA
SÁNCHEZ-VIVES**

Premi FIDEM 2020 a la
Corresponsabilitat



MANUEL SERRANO

48th Fondation ARC
Léopold Griffuel Award



JORDI SORT

12è Premi Duran Farell
d'Investigació Tecnològica



MIQUEL VILA

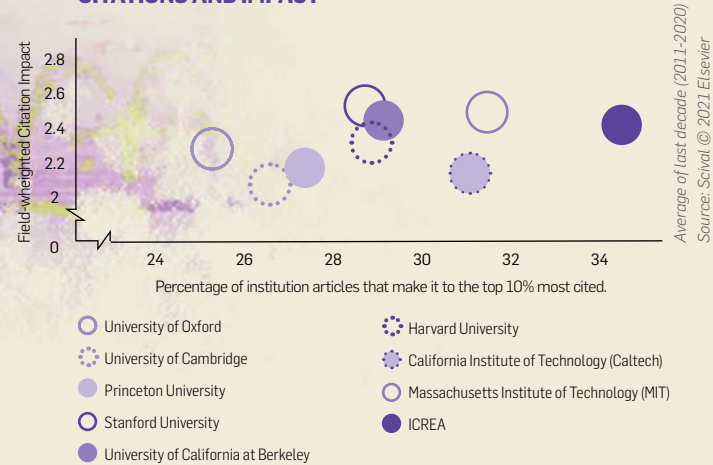
Parkinson-2019 Award,
Sociedad Española de
Neurología



THE NEED TO DREAM

ICREA is among the leading research institutions in the world.

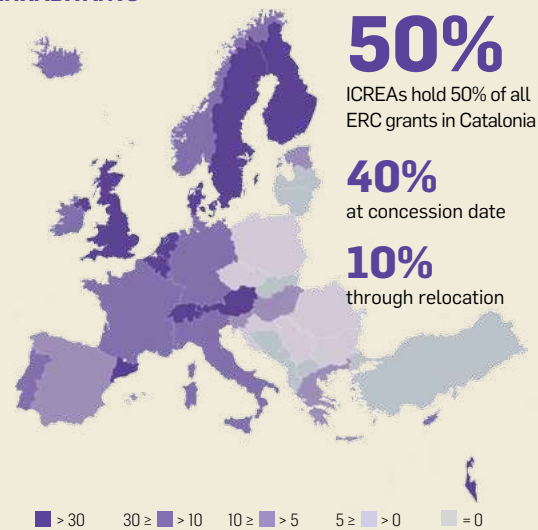
CITATIONS AND IMPACT



THE NEED TO SHARE



ERC GRANTS PER MILLION INHABITANTS



Catalan universities and research centres provide an exceptional environment for research. Thanks to this, ICREA Research Professors in 2020 have been able to continue performing beyond expectations.

This year, **7** ICREA Research Professors have been included among the **top 1% most cited researchers worldwide** by Clarivate Analytics.



JOSEP DALMAU
IDIBAPS



MANEL ESTELLER
IJC



ESTEVE CORBERA
UAB



JOSEP M. LLOVET
IDIBAPS



FRANK KOPPENS
ICFO

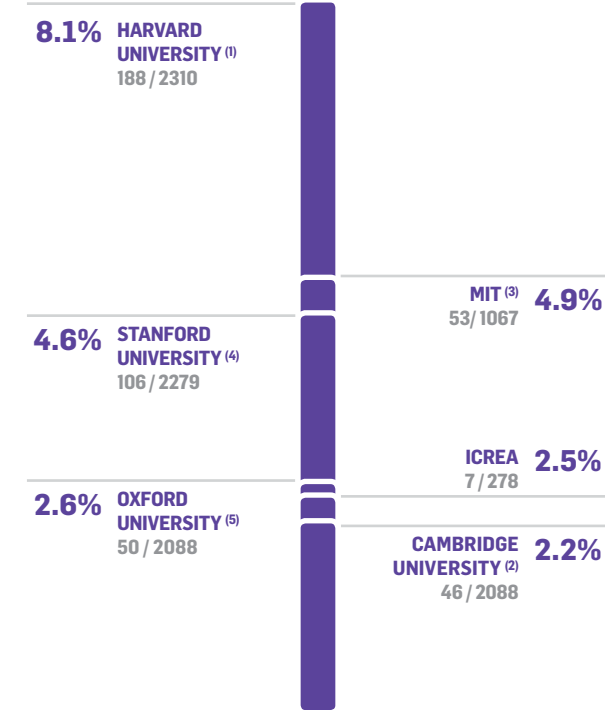


MACIEJ LEWENSTEIN
ICFO



MAURIZIO MENCUCCHINI
CREAF

HIGHLY CITED OVER TOTAL ACTIVE PI



Citation scores from: Clarivate Analytics 2020
 Number of active PI of each institution come from: (1) <https://oir.harvard.edu/fact-book/faculty-and-staff>
 (2) https://www.information-hub.admin.cam.ac.uk/files/facts_figures_2019_poster_for_web.pdf
 (3) <http://web.mit.edu/facts/faculty.html> (4) <https://facts.stanford.edu/academics/faculty-profile/>
 (5) <https://hrsystems.admin.ox.ac.uk/files/staffingfigures201920.pdf>

ICREA Research Professors produce a staggering amount of high profile publications, and are an extremely influential scientific community.

2,174

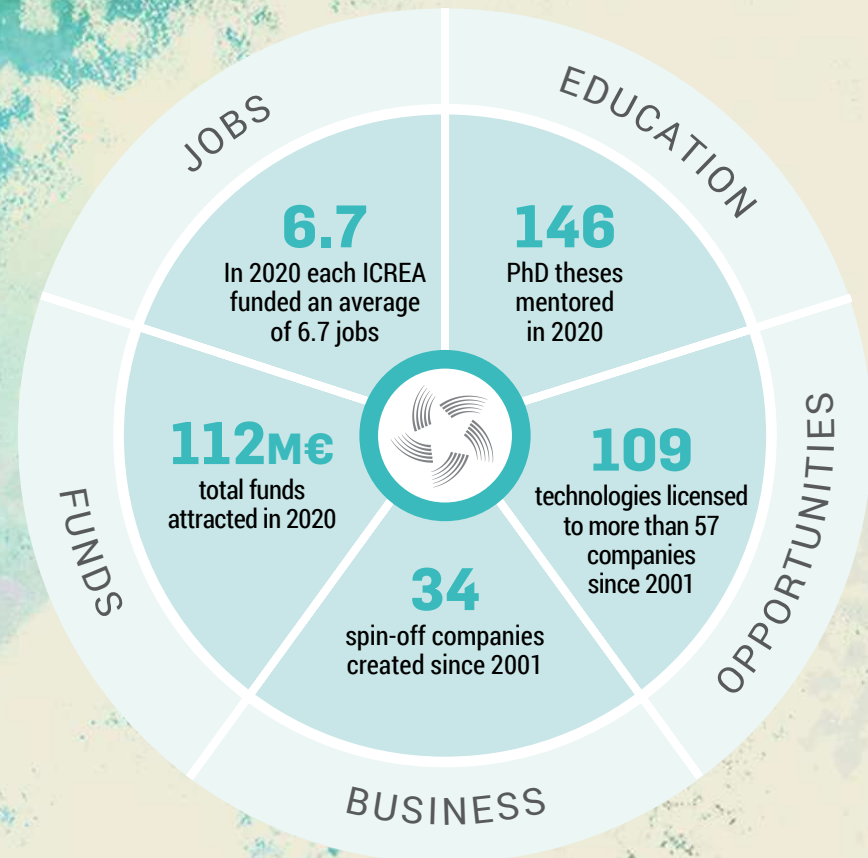
total publications

89%

articles in first quartile publications

There is neither basic nor translational science. There is only science, which changes the way we understand ourselves and the universe, and which eventually leads to amazing discoveries. In the meantime, it attracts funds, creates occupation and brings new technologies and opportunities.

These are some relevant figures of our achievements:



THE NEED TO TRANSFORM



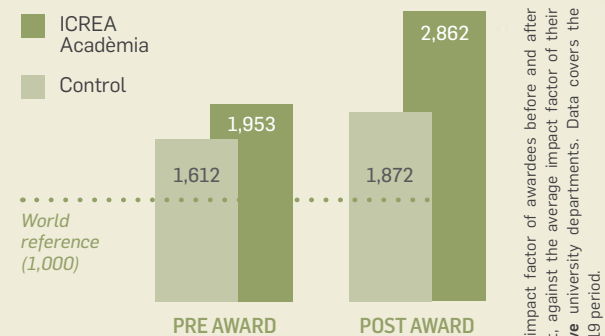
THE NEED TO NURTURE

To further support research in Catalan public universities, ICREA offers research intensification grants to selected faculty who are in an expanding phase of their careers through the **ICREA Acadèmia programme**.

Over the last decade, the grant has helped researchers to increase their fund attraction and expand their international funding options. The amount of funding went up by 38% (2008-2018), and the number of different funding bodies increased over 30% after concession (2009-2019)*.

299 ICREA Acadèmia grants to date **120** active grants

NORMALISED IMPACT



*Sources: ICREA, Technical Office SUR - Generalitat de Catalunya, Research Marks © Analytics & Clarivate Analytics ©

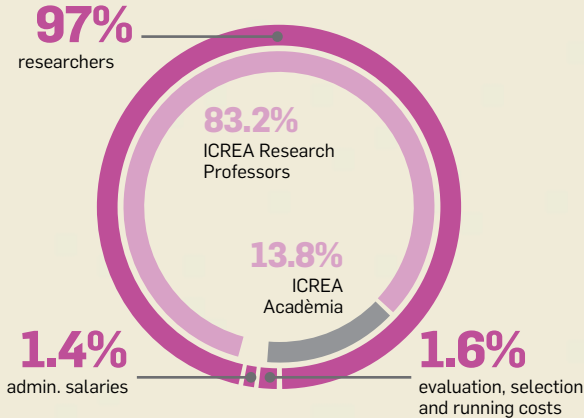
Average impact factor of awardees before and after the grant, against the average impact factor of their respective university departments. Data covers the 2010-2019 period.

This year 2 ICREA Acadèmia grantees, **Luisa F. Cabeza** (UdL) and **Jordi Salas-Salvadó** (URV), are included among the top 1% most cited researchers by Clarivate Analytics.

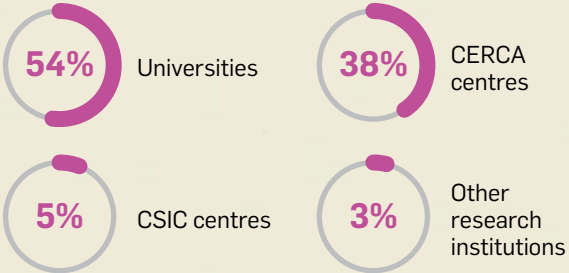


THE NEED TO EXPLAIN

We are very proud to say that most all our funding comes from the Catalan government. We use it wisely and invest the funds with the utmost care to make sure that our resources are directly turned into the best possible science. Here is a snapshot of our budget structure.



BUDGET ALLOCATION BY TYPE OF HOST INSTITUTION



100%
Government of Catalonia



In the end, our secret is no secret at all. ICREA is an instrument carefully crafted to meet the needs of the Catalan research system which has become a symbol of its excellence. We are very proud of having 47 host institutions allied under the same values and vision: to use research to contribute to a fairer, safer and more prosperous society for all.

This is our secret.

Find out more at: www.icrea.cat/memoir2020



ICREA promotes the advancement of knowledge as a contribution to peace and fairness for all, to provide welfare, defend equality and guarantee freedom. All Sustainable Development Goals can flourish from knowledge and research, and ICREA Research Professors work directly on each of these goals to bring them closer every day.

This is the world we want.

An illustration of two children, a boy and a girl, kneeling on a sandy beach and building a sandcastle together. The background is a colorful, abstract painting with splatters of purple, pink, yellow, and blue. The text "THE NEED TO COOPERATE" is written in large, white, sans-serif capital letters across the bottom of the illustration.

THE NEED TO COOPERATE

Our 47 host institutions

UNIVERSITIES

Universitat de Barcelona (UB)
Universitat Autònoma de Barcelona (UAB)
Universitat Politècnica de Catalunya (UPC)
Universitat Pompeu Fabra (UPF)
Universitat de Lleida (UdL)
Universitat de Girona (UdG)
Universitat Rovira i Virgili (URV)
Universitat Oberta de Catalunya (UOC)
Universitat de Vic - Universitat Central de Catalunya (UVic-UCC)

CERCA CENTRES

Centre Internacional de Mètodes Numèrics en Enginyeria (CIMNE)
Centre de Recerca en Agrigenòmica (CRAG)
Centre de Recerca Ecològica i Aplicacions Forestals (CREAF)
Centre de Regulació Genòmica (CRG)
Centre de Recerca en Economia Internacional (CREI)
Centre de Recerca Matemàtica (CRM)
Institut de Bioenginyeria de Catalunya (IBEC)
Institut Català d'Arqueologia Clàssica (ICAC)
Institut de Ciències Fotòniques (ICFO)
Institut Català d'Investigació Química (ICIQ)
Institut Català de Nanociència i Nanotecnologia (ICN2)
Institut Català de Paleontologia (ICP)
Institut Català de Recerca de l'Aigua (ICRA)
Institut d'Investigacions Biomèdiques August Pi i Sunyer (IDIBAPS)
Institut d'Investigació Biomèdica de Bellvitge (IDIBELL)
Institut de Física d'Altes Energies (IFAE)
Institut d'Investigació en Ciències de la Salut Germans Trias i Pujol (IGTP)

Institut de Recerca contra la Leucèmia Josep Carreras (IJC)
Institut Hospital del Mar d'Investigacions Mèdiques (IMIM)
Institut Català de Paleoecologia Humana i Evolució Social (IPHES)
Institut de Recerca Biomèdica de Barcelona (IRB Barcelona)
Institut de Recerca en Energia de Catalunya (IREC)
Institut de Recerca de la Sida - IrsiCaixa (IrsiCaixa)
Institut de Salut Global Barcelona (ISGlobal)
Internet i Innovació Digital a Catalunya (i2CAT)
Vall d'Hebron Institut d'Oncologia (VHIO)
Vall d'Hebron Institut de Recerca (VHIR)

CSIC CENTRES

Centre d'Estudis Avançats de Blanes (CSIC - CEAB)
Institut de Biologia Evolutiva (CSIC - IBE)
Institut de Biologia Molecular de Barcelona (CSIC - IBMB)
Institut de Ciències de l'Espai (CSIC - ICE)
Institut de Ciències del Mar (CSIC - ICM)
Institut de Ciència de Materials de Barcelona (CSIC - ICMA)
Institute of Microelectronics of Barcelona - Centre Nacional de Microelectrònica (CSIC - IMB-CNM)
Institució Milà i Fontanals (CSIC - IMF)

OTHER RESEARCH INSTITUTIONS

Barcelona Supercomputing Center - Centro Nacional de Supercomputación (BSC - CNS)
Institute for Political Economy and Governance (IPEG)
Institut de Recerca Sant Joan de Déu (IRSJD)