

**20**  
YEARS  
2001-2021

## ICREAMEMOIR2021

[www.icrea.cat/memoir2021](http://www.icrea.cat/memoir2021)

IT'S ALL  
ABOUT  
PEOPLE

What if we gave the most **talented** researchers freedom and **trust** to work in the science they are passionate about?

What if we created the right environment for this **community** to go beyond the established boundaries of science with creativity and **imagination**?



# CATALUNYA

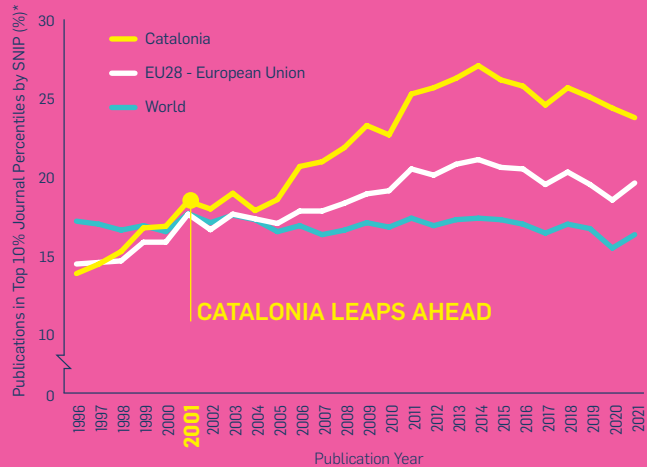
Prosperous societies invest in research to gain knowledge and foster their future wellbeing.

In 2001 a group of politicians and scientists came together under a bold project, led by Prof. Mas-Colell, aimed at taking Catalan science to the next level.

ICREA was part of this project. It was launched in 2001 with a challenging model to help the system recruit outstanding scientists from around the world.

From this point onwards, Catalonia embarked on a policy of intense development of its research and innovation capabilities. The creation of research centres alongside the vital role played by universities gave these efforts visibility and recognition as ICREA unfolded its wings.

## Publications (%) in the top 10% journals



Data from the period 1996-2021. Source: Scival © 2022 Elsevier

\* SNIP - Source Normalized Impact per Paper. It measures contextual citation impact by weighting citations based on the total number of citations in a given subject field.

The key to the success of the ICREA model lies in the fact that ICREA Research Professors can choose to work at the host institutions that are the best fit for their projects. At the same time, their choice became a recognition of the strategy of these institutions.



# TRUST

Trust is the unseen force required to build competent, cohesive societies.

Excellence in research goes far beyond the push for quick results. ICREA makes a firm commitment to this philosophy by offering full-time, tenured positions with complete academic freedom right from day one.

Researchers enjoy the flexibility of being able to choose their own research avenues and can switch institutions throughout their careers. A system of regular evaluations measures their academic growth every five years while encouraging ambitious and daring projects.

ICREA is run by a small team of dedicated people, who constantly strive to make it one of the most responsive administrative bodies in the world.



# COMMUNITY

Science can only achieve a truly profound impact when researchers are treated with a holistic, all-encompassing approach.

One of the firmest commitments at ICREA is that of taking a personal and individual approach to the needs of every researcher.

An ICREA Research Professor is not only an individual who leaves their mark on science, but a person who leaves a deep impact on every aspect of Catalan culture and society.

Because it's all about people.



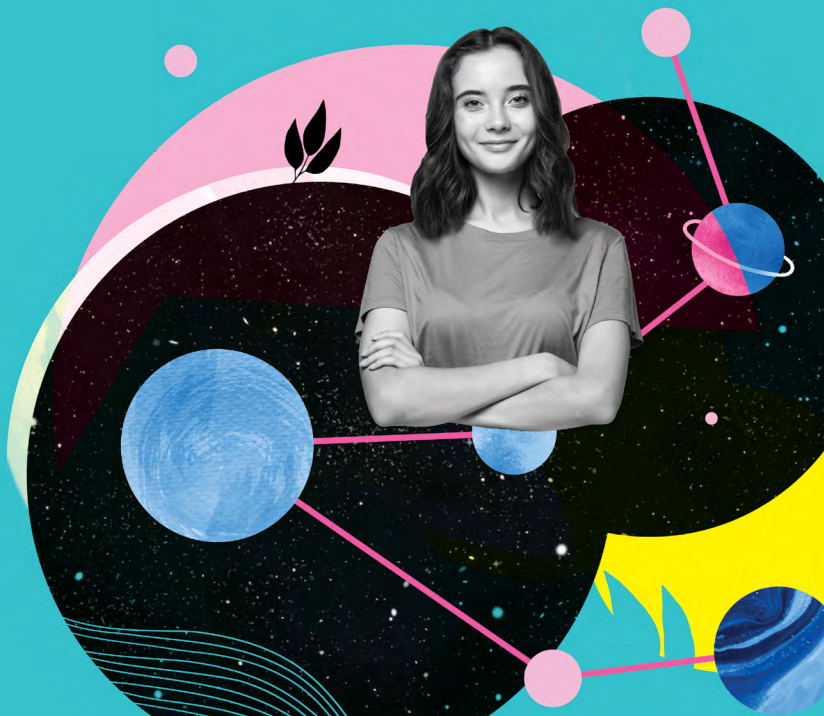
ICREAs regularly teach at our universities



ICREAs are business entrepreneurs



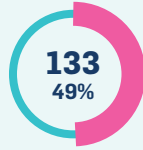
children of our ICREAs go to Catalan schools



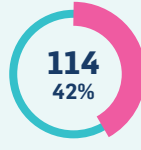
## ICREA in 2021

# 273

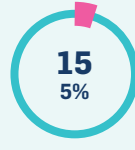
ICREA Research Professors



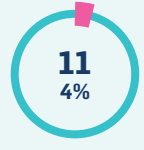
in universities



in CERCA centres

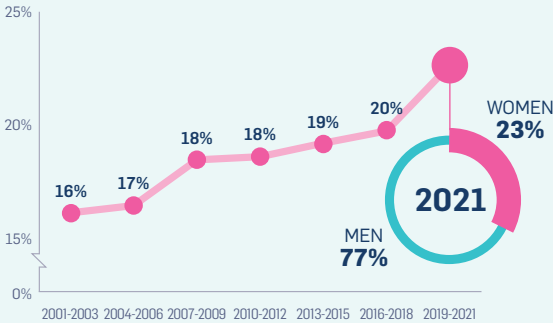


in CSIC centres

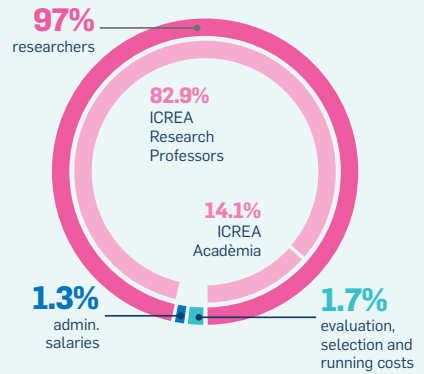


in other centres

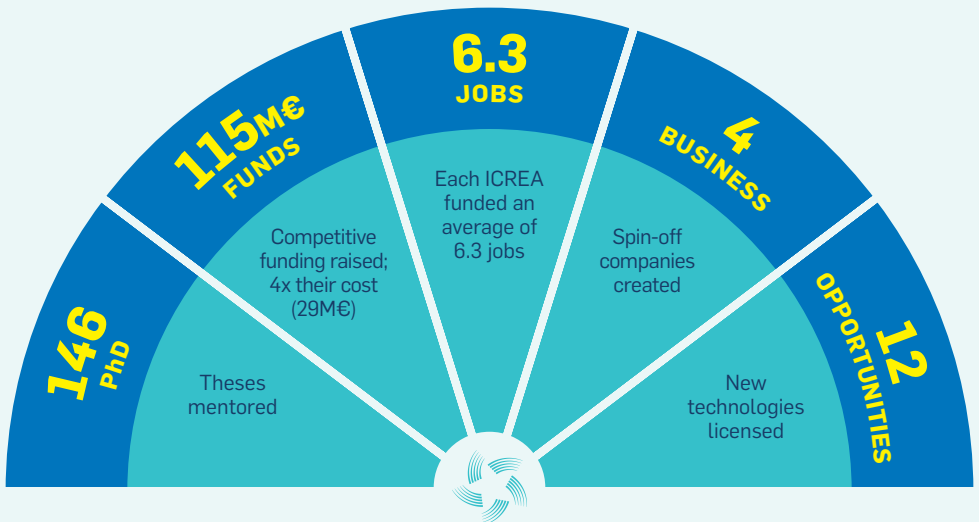
## WOMEN AT ICREA



## BUDGET ALLOCATION

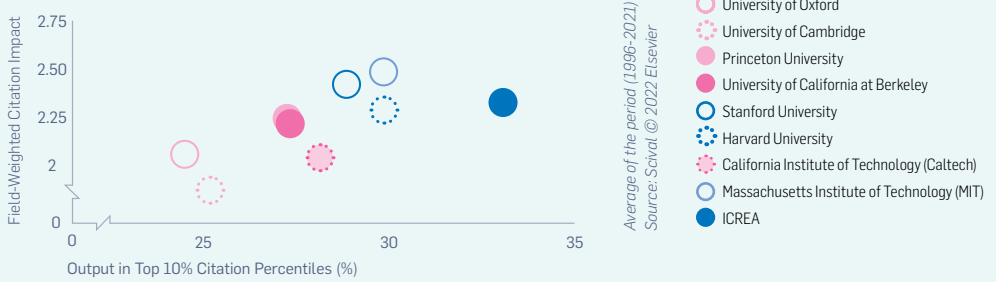


## IMPACT 2021



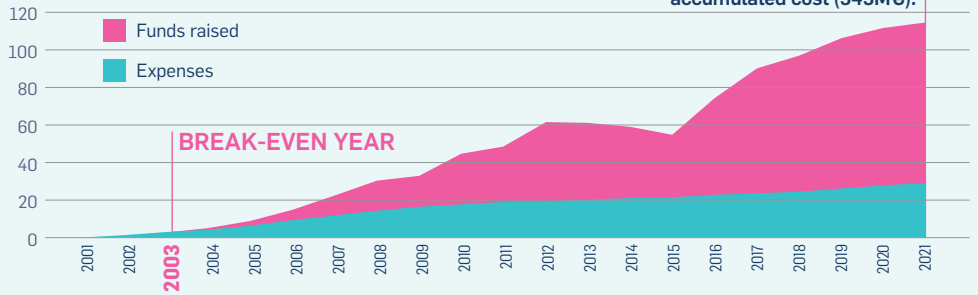
# 20 years of outstanding research

## CITATIONS AND IMPACT

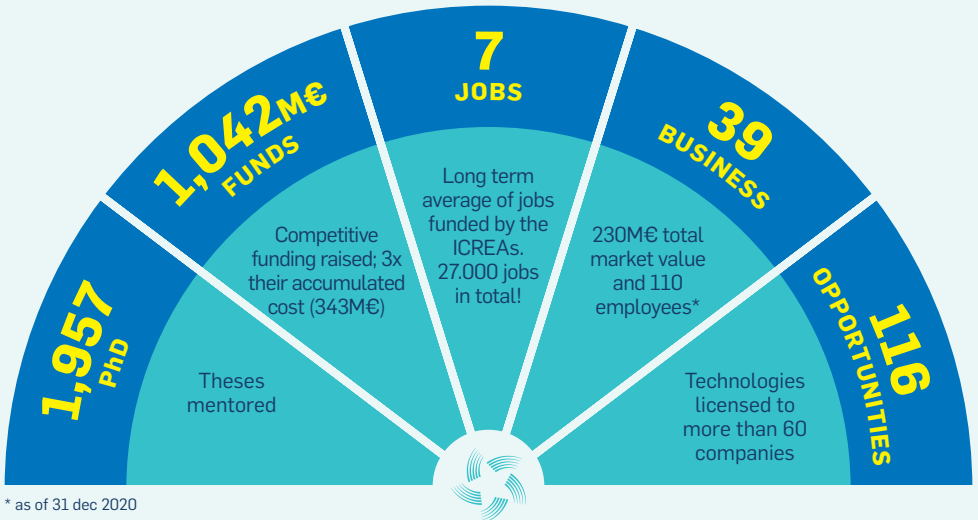


## EXPENSES VS. FUNDS RAISED

In million euros



## IMPACT 20 YEARS



\* as of 31 dec 2020



Passeig Lluís Companys, 23 - 08010 Barcelona  
Tel. +34 935670686 · [twitter.com/icreacommunity](https://twitter.com/icreacommunity)  
[icrea@icrea.cat](mailto:icrea@icrea.cat) · [www.icrea.cat](http://www.icrea.cat)

